

## STANDARD Q

# Influenza A/B



STANDARD Q Influenza A/B test is an immunoassay that can identify the presence of Influenza A and B viral nucleoprotein antigen in respiratory specimens, and displays the result in a qualitative way. STANDARD Q Influenza A/B Test helps with diagnostic and treatment decisions for patients in clinical setting, such as whether to prescribe antiviral medication.

### GENERAL INFORMATION:

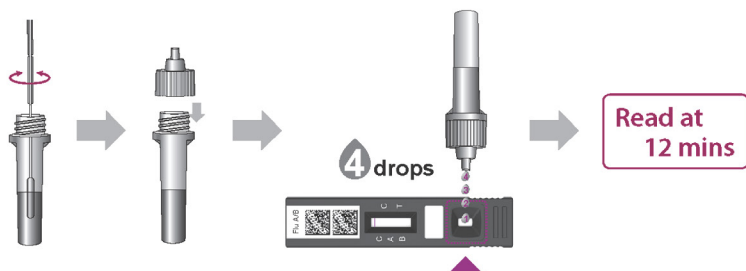
- Detection of Influenza Antigens
- Objective Result: Test result can be read and interpreted by STANDARD F Analyzer
- Store at 2-40°C / 36-104°F



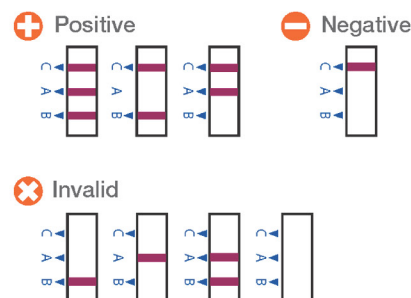
### Specification

Specimen	Nasopharygeal Swab / Nasopahrygeal wash / aspirate
Test Time	8-12 mins. (Do not read after 30 mins.)
Specimen Volume	200µl
Storage Temperature	2-40°C / 36-104°F

### TEST PROCEDURE



### INTERPRETATION



### TEST PERFORMANCE

Reference Method	Sensitivity	Specificity
PCR	Influenza A: 91.2%(31/34) Influenza B: 91.7%(33/36)	Influenza A: 100%(212/212) Influenza B: 99.1%(210/212)

### ORDERING INFORMATION

Category	Product	Pack Size
Respiratory Disease	STANDARD Q Influenza A/B Test	25 Test
	STANDARD Q Influenza Control	Pos x 10 / Neg x 10